



1936 JULY 1936

SUN	MON	TUE	WED	THU	FRI	SAT
		1	2	3	4	
5	6	7	8	9	10	11
12	13	14	15	16	17	18
19	20	21	22	23	24	25
26	27	28	29	30	31	

1936 JANUARY 1936

SUN	MON	TUE	WED	THU	FRI	SAT
		1	2	3	4	5
6	7	8	9	10	11	12
13	14	15	16	17	18	19
20	21	22	23	24	25	26
27	28	29	30	31		

Invasive Species in New York State

Who's minding the Store?

Steven Jay Sanford

Director

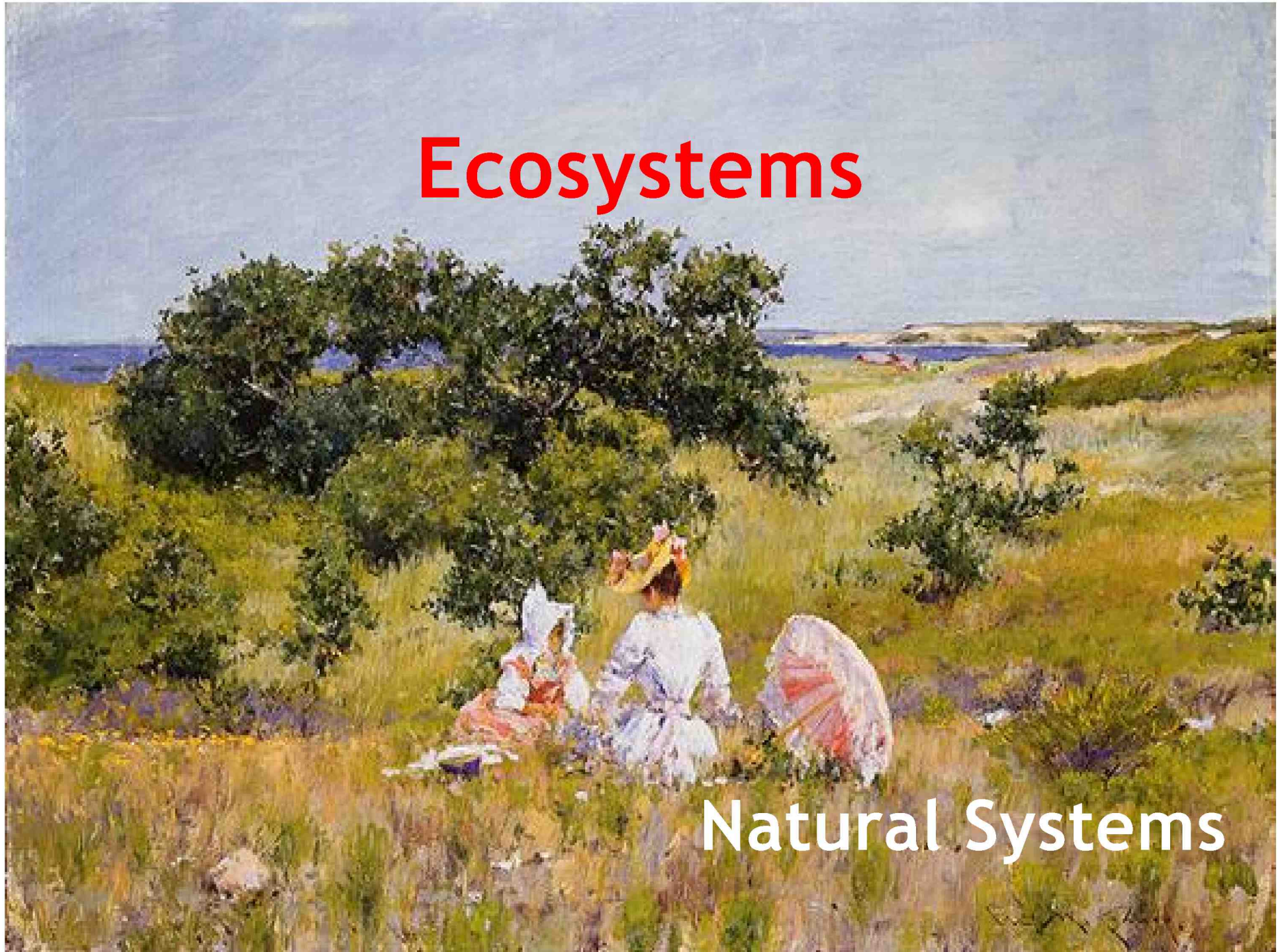
Office of Invasive Species Coordination

NYSDEC

**Invasive species affect
the lives of most
New Yorkers...**

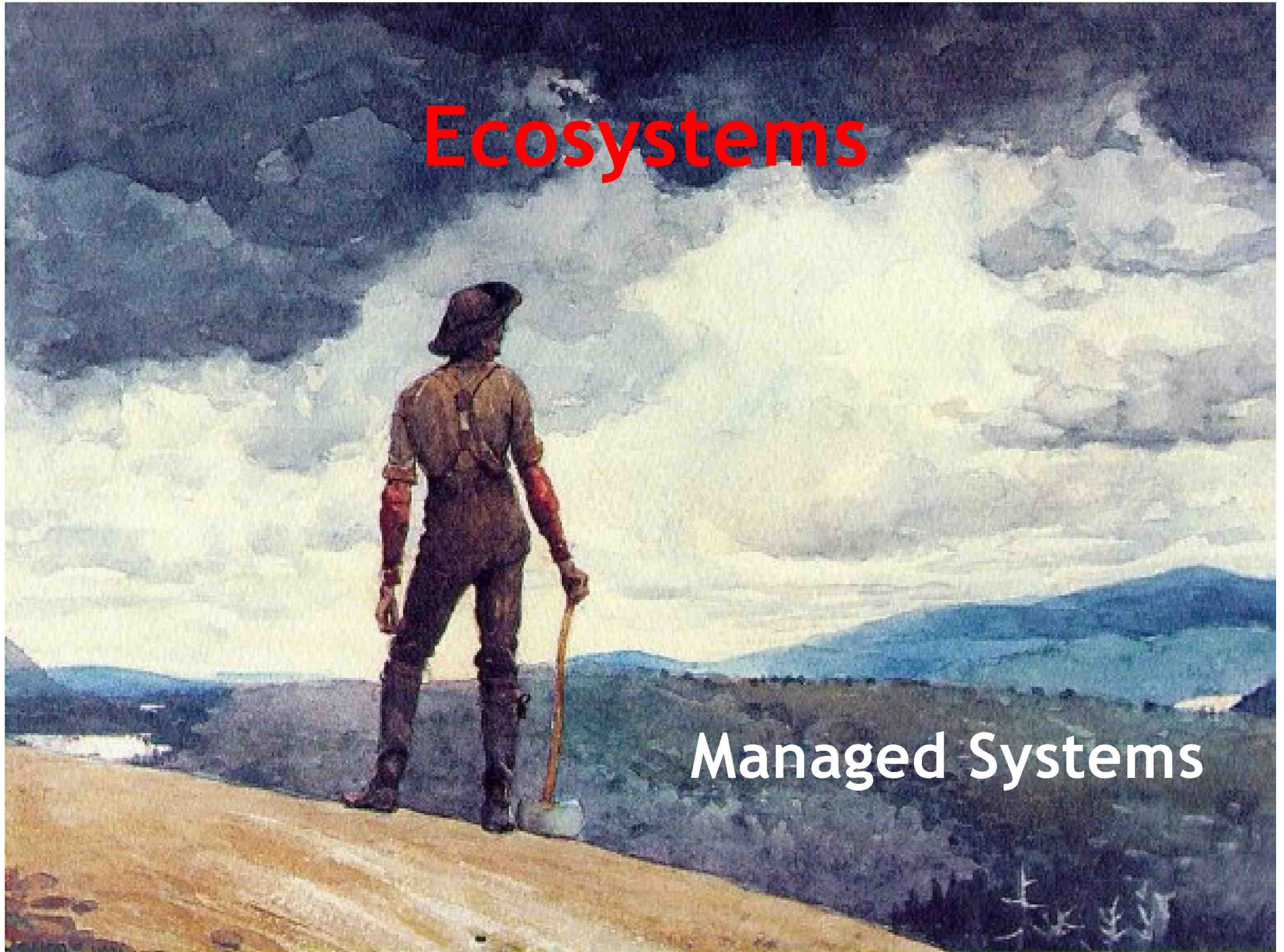
Ecosystems

Natural Systems



Ecosystems

Managed Systems



Food Supply



Agriculture

Food Supply



Harvested Fish, Shellfish & Wildlife

Built Environs

Industry & Transportation



Built Environs

Gardens, Landscaping, Pets



Recreation

Angling



A painting of a sailboat with four people on a choppy sea under a cloudy sky. The sailboat is a small, dark-hulled vessel with a large, light-colored sail. Four people are on board: a man in a hat and dark clothing at the helm, a woman in a hat and dark clothing next to him, and two other people in the foreground. The sea is dark and choppy, with white foam from the waves. The sky is filled with large, white, billowing clouds. The overall style is that of a 19th-century maritime painting.

Recreation

Boating

Recreation

Parks



What (was) the IS Task Force?

Laws of New York, 2003
Chapter 324

Government agencies
Conservation organizations
Trade groups
Academia

The background of the slide is a photograph of a landscape under a severe weather system. A bright, jagged lightning bolt strikes the ground in the center of the frame, illuminating the scene. The sky is filled with dark, heavy clouds, and several other smaller lightning bolts are visible in the distance. The foreground shows a flat, green field with a few scattered trees and bushes on the horizon.

ISTF Charge

Assess impacts,
identify existing actions, and
report recommendations
to Governor and Legislature
by 30 November 2005

ISTF Report

2004									2005										
A	M	J	J	A	S	O	N	D	J	F	M	A	M	J	J	A	S	O	N
ISC																			
		Surveys																	
					Team drafts														
											Full draft								
												ISTF review							
															Public				

New York invasions since ISTF established in 2004...

European Crane Fly
Southern Bacterial Wilt
Swede Midge
Brown Fir Longhorn Beetle
Chronic Wasting Disease
European Wood Wasp
Northern Snakehead Fish
Bloody Red Shrimp
Chinese Mitten Crab
Didymo
Oak Wilt
...next ???

Good News

Most of the Task Force recommendations
are being implemented
with EPF funding...

...equipping NYS agencies and partners
to meet IS challenges.

Strategic Elements

Coordination

Prevention

Education

Early detection

Rapid response

Control or management

Research

Overarching Principles

Deliver program primarily through partners

Allocate EPF resources primarily to partners

NYSISC and Advisory Committee

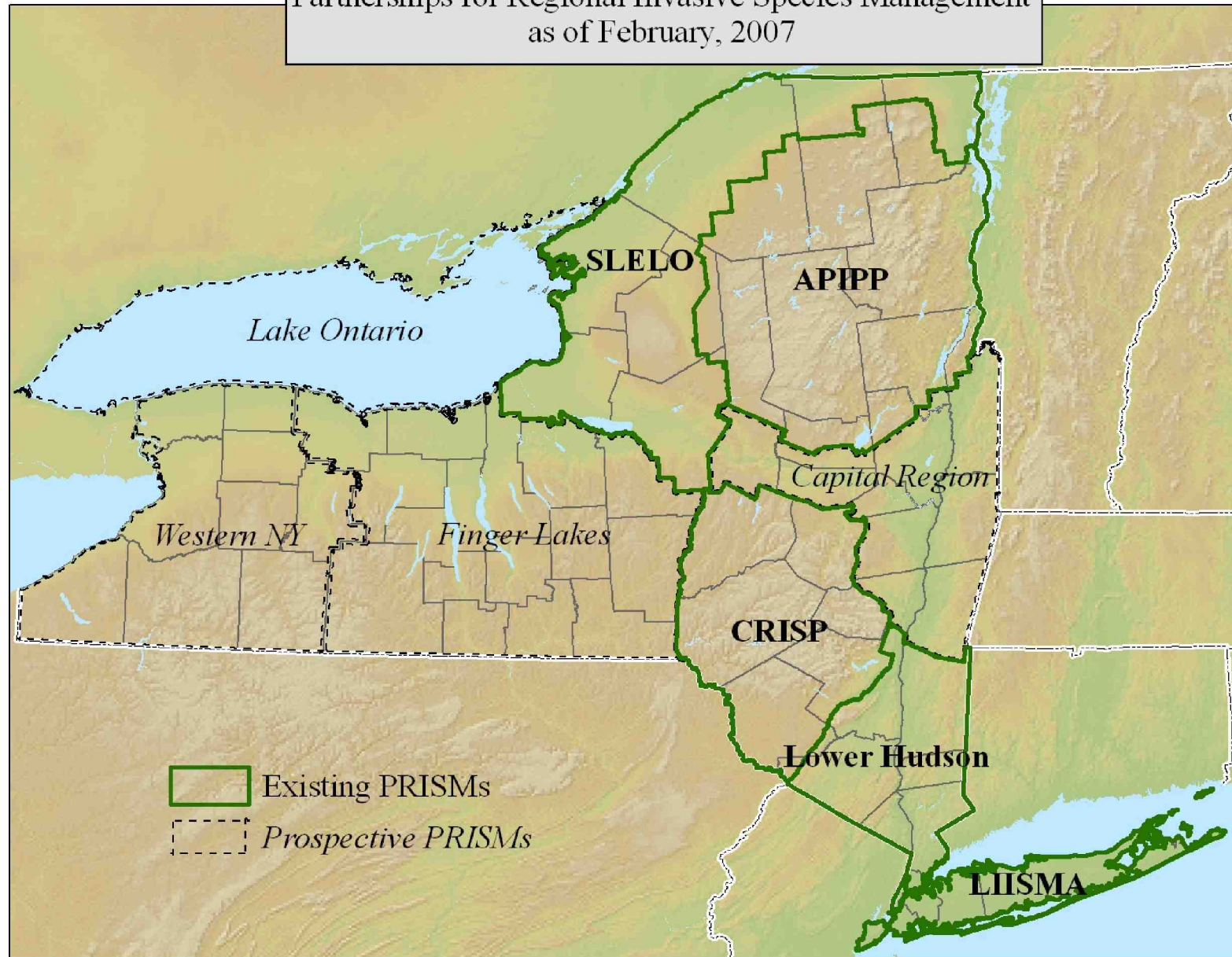
NYSIS Council supported by NYS staff

Regional Partnerships

**PRISMs - partnerships for regional
invasive species management**

**Critical means of delivering IS
programs throughout NYS**

Partnerships for Regional Invasive Species Management
as of February, 2007



Core Functions

Coordination (among partners)

Volunteers (recruit & train)

Education (identify & meet needs)

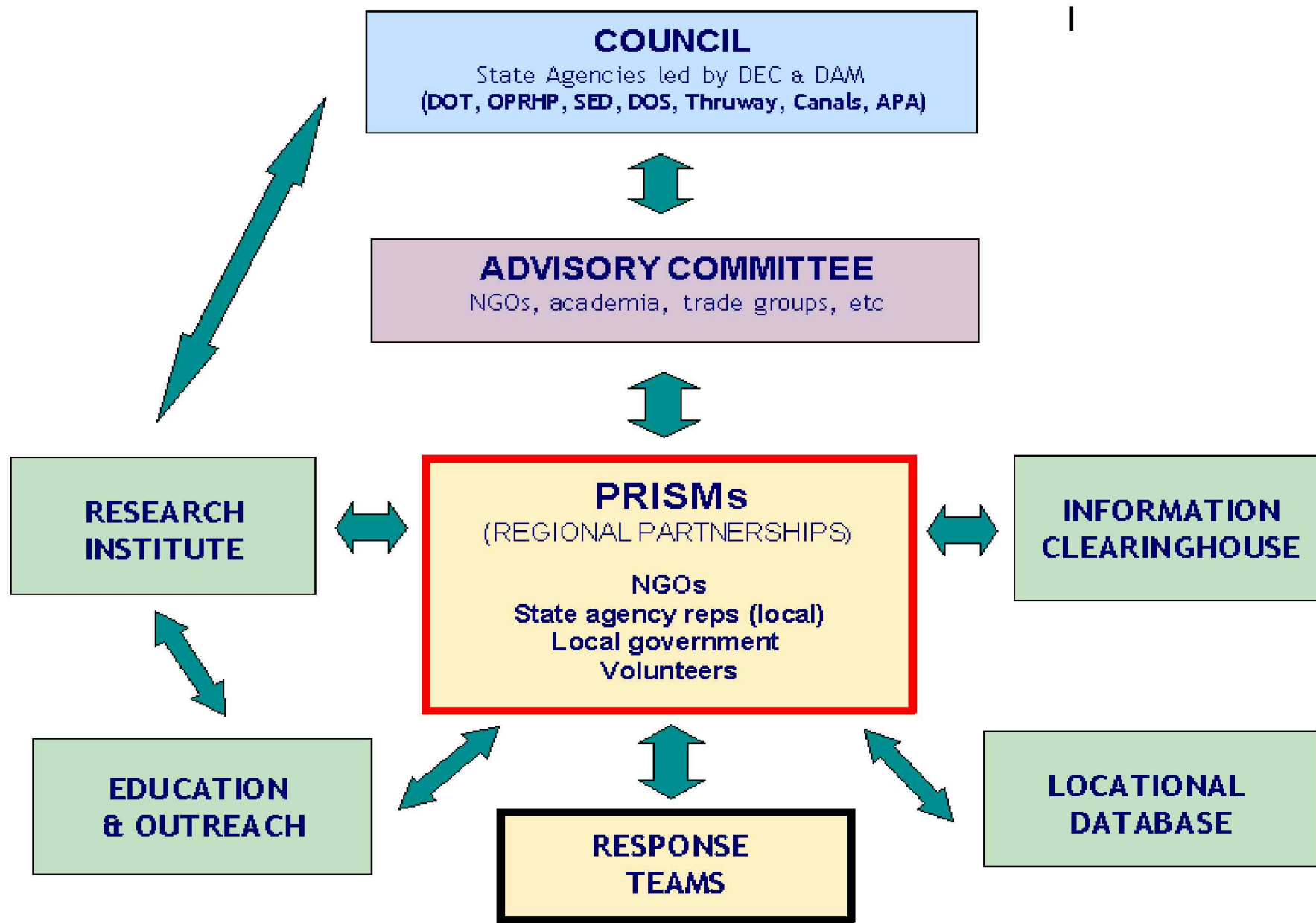
Early Detection (monitoring network)

Rapid Response (pilots)

Eradication (implement projects)

Research (citizen science)

Planning (integrate existing plans)



Recommendations

1

Establish a permanent leadership structure to coordinate IS efforts.

Federal model

What are NYISC & NYSISAC?

Laws of New York, 2008
Chapter 26

ECL Article 9, Title 17

New Structure

Council
(9 agency reps)

**Advisory
Committee**
(25 groups)

Office of Coordination
(4 agency staff)

Council Members

DEC & DAM (co-leaders)

Education

Parks

State

Transportation

Thruway

Canals

APA

New York invasions since IS Council established in 2008...

Asian Clam (Champlain Canal)

Chinese Mitten Crab (Hudson River tribs)

Northern Snakehead Fish (Orange Co.)

Hydrilla (Orange Co. + Suffolk Co.)

Oak Wilt (Schenectady County)

Kudzu (Rockland County)

Spiny Waterflea (Great Sacandaga Lake)

Emerald Ash Borer? Asian Swamp Eel ?

Advisory Committee

Broad stakeholder representation

Most slots ID'd in statute

Meeting Fall 2008

Core Functions

(NYSISC, NYSISAC, Office of Coordination)

Coordinate with all stakeholders

Communicate (Governor & Legislature)

Identify program needs

Identify resource needs

Develop programs

Pursue resources

Implement Title 17

Recommendations

2

Prepare and implement a
comprehensive
IS management plan.

Contract

Plan Outline

Roles

Responsibilities

Authorities

Resources

Integration

Gaps

Strategies

Recommendations

3

Allocate appropriate resources to
invasive species efforts.

SFY 05-06 \$ 1.0 M AtL

SFY 06-07 \$ 3.25 M EPF

SFY 07-08 \$ 5.0 M EPF

SFY 08-09 - \$ 5.0 M EPF

Recommendations

4

Establish a comprehensive education
and outreach effort.

Cornell Cooperative Extension

Outreach & Education

Identify needs

Catalog what's available

Develop new materials

Develop new training

Deliver training

Coordinate with PRISMs

Integrate with Research Institute

Integrate with Clearinghouse

Recommendations

5

Integrate databases and information clearinghouses.

**Natural Heritage Program
Sea Grant**

Locational Database

The invasive “map” for NYS

Available on [www](#)

GIS for all species

Link to others

Identify/meet needs

Integrate with Clearinghouse

Information Clearinghouse

The invasive “library” for NYS

Available on [www](#)

Info about all species

Link to others

Identify/meet needs

Integrate with Database

Recommendations

6

Convene a regular invasive species conference.

Invasive Plant Council - February 2007

American Wildlife Conservation Foundation - March 2007

Northeast Natural History Conference - April 2008

BIENNIAL SUMMIT - 2009

Recommendations

7 Formalize NYS IS policy and practices.

9 Coordinate and streamline regulatory processes.

New Office

Four-tier System

Report by January 2010

- ~ List of prohibited species
- ~ List of regulated species
- ~ List of unregulated species
- ~ Procedure for the review of “new” species

Recommendations

8

Establish the
Invasive Species Research Institute

Cornell University

Research Coordination

Establish IS Research Advisory Board

Catalog existing research

Identify research needs

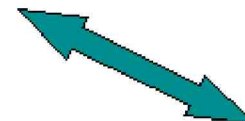
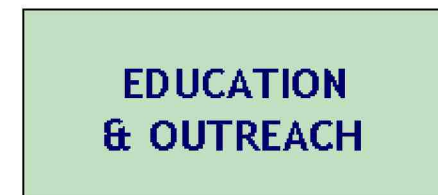
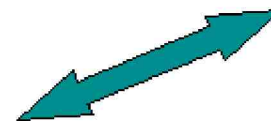
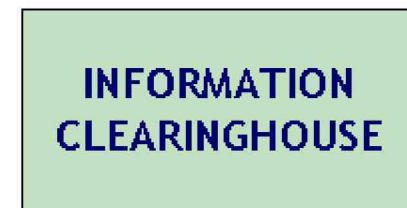
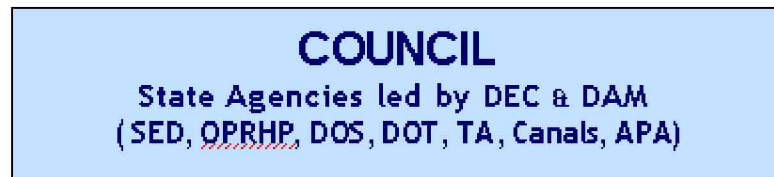
Prioritize research needs

Identify researchers

Catalog available funding

Recommend research priorities to NYSISC

Track progress/report to NYSISC





Public Enemy # 2

Applied Research

Supplement NYSDOT research funds to
complete *Phragmites* biocontrol

Priority based on existing information

Future priorities guided by Council
and Institute

Recommendations

10

**Encourage non-regulatory approaches
to prevention.**

**Clean Stock Pilot
Green Certification**



Small Fruits



Clean Stock Pilot

NYS Ag Experiment Station (Geneva)

Virus-free before propagation or distribution

Grapes, small fruits (Currants), tree fruits

Protocol for voluntary self-certification

Recommendations

11

Influence Federal actions to
support invasive species
prevention, eradication and
control.

New Office

Recommendations

12

Recognize and fund
demonstration projects.

PRISMs

Eradication Grants

\$ 1 million for Grants

- Eradication only
 - Aquatic and Terrestrial species
- \$ 100,000 cap, 1:1 match
- Municipalities, NFPs, agencies
 - Aquatics awarded Fall 2007
 - Terrestrial announced Fall 2008

First Priorities

OISC Staffing
Advisory Committee (NYS + Fed)
Implementing Recommendations
Comprehensive Plan
“4-Tier” List Process
Ballast Water legislation
Rapid Response Framework

Think pathways !

Bait,
Boats,
Boots
(and Ballast Water)

Questions?

